



GiOVEDIA®

THE FUTURE OF BEAUTY, NOW

THE FIRST  
COSMETIC  
LIFTING  
GEL

INFORMATION RESERVED EXCLUSIVELY FOR SPECIALIZED BEAUTY CENTERS

# THE FIRST COSMETIC LIFTING GEL

---



- Patented gel formula
- Fills and illuminates
- Instantly tones and lifts tissues
- Treatment performed in a few minutes

GIOVEDIA®

# A REVOLUTION IN ADVANCED PROFESSIONAL AESTHETICS

---

Its unique formula allows the **instant lifting of tissues**, making the skin visibly **firmer, plumped** and **brighter**; it also reduces fine lines and wrinkles, increasing tissue tone and acting against skin hypotonia.

The result of years of scientific research, GIOVEDIA lifting gel presents a precious, safe and balanced blend of ingredients, including two which are completely new in cosmetics: homocysteic acid and ammonium salt.

GIOVEDIA is the first lifting gel on the global cosmetic scene, protected by an **international patent** and **exclusively for use by professionals within the aesthetic sector**.

Its application is given only by the hand of a beauty professional, through the **GIOVEDIA Touch**, a specific **massage technique**. The application is assisted, in certain cases, by the use of special spatulas to treat particular areas of the face and body.

# SCIENTIFIC RESULTS AND STUDIES

---



GIOVEDjA®

# FACE, NECK AND DÉCOLLETÉ, BODY

## EYE



AFTER 1 SESSION  
**GIOVEDIA**  
**LIFTING GEL**  
 (Female, 68 years old)

## NECK



AFTER 1 SESSION  
**GIOVEDIA**  
**LIFTING GEL**  
 (Female, 42 years old)

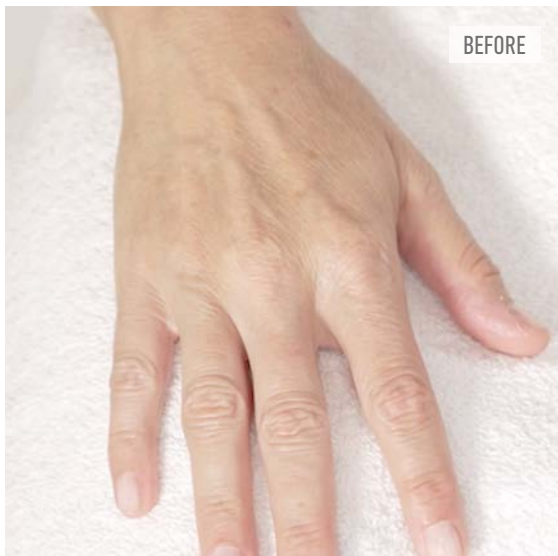


## ARMS



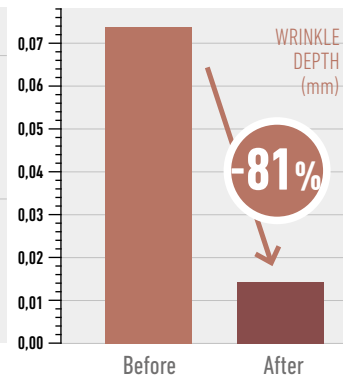
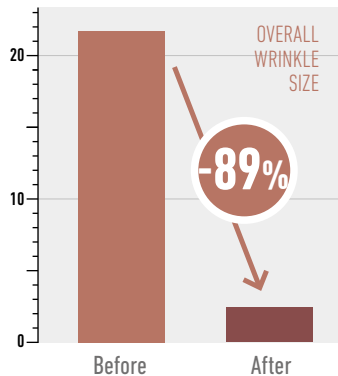
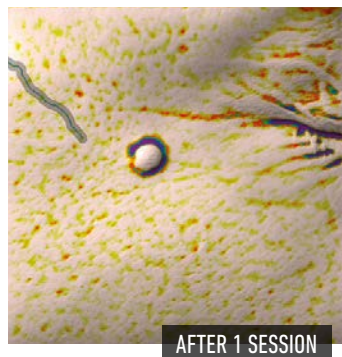
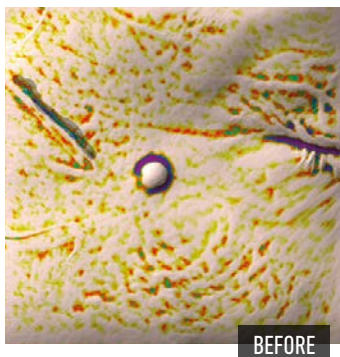
AFTER 1 SESSION  
**GIOVEDIA**  
**LIFTING GEL**  
(Female, 64 years old)

## HANDS

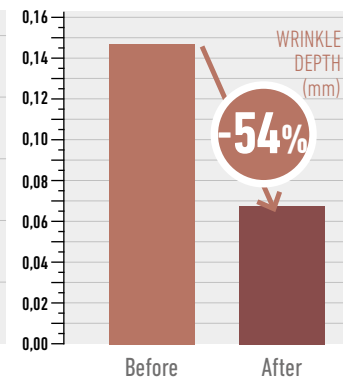
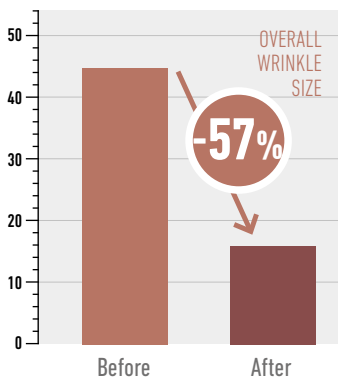
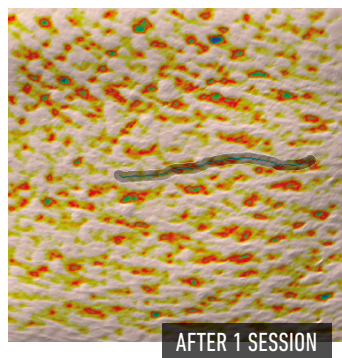
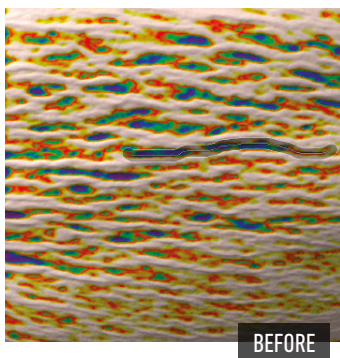


AFTER 1 SESSION  
**GIOVEDIA**  
**LIFTING GEL**  
(Female, 45 years old)

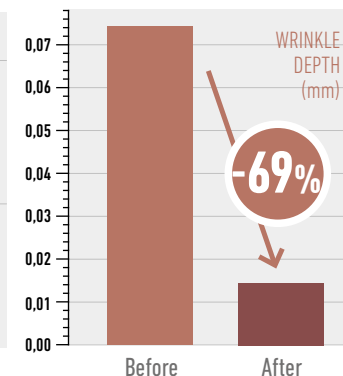
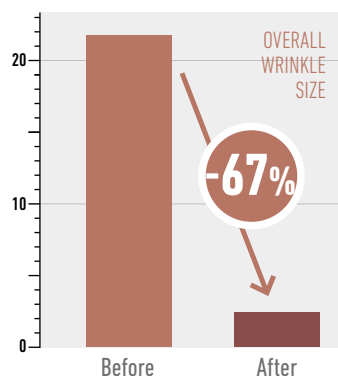
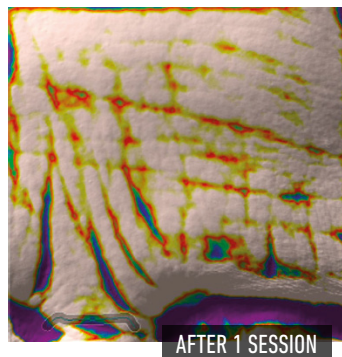
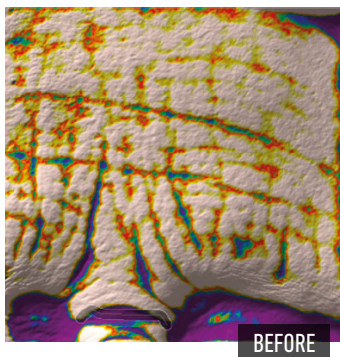
## FINE PERIOCULAR WRINKLES



## WRINKLES MID-ARM



## LARGE FRONT WRINKLES



SKIN ANALYSIS PERFORMED USING ANTERA 3D MULTISPECTRAL SKIN ANALYSIS CAMERA

# FACE AND BODY, ALL SKIN TYPES

---

**Versatility** is one of the hallmarks of GIOVEDIA Lifting Gel since it can be used on the face as well as the body. As a single session, it has an immediate effect. After a protocol of several sessions, the effects are enhanced and stabilized. It is suitable for **women and men of all ages and with all skin types**.

Another advantage of GIOVEDIA Lifting Gel is **customization**, because it can be aimed at treating a particular area of the **face / body**, focusing on specific areas according to the personal needs of each individual client.

GIOVEDIA Lifting Gel **can be combined** with other beauty treatments to obtain an enhanced result. It is recommended to differentiate the combination of treatments into separate sessions.



## MATURE SKIN PROTOCOL

Mature skin, deep wrinkles  
and skin laxity

RECOMMENDED CYCLE:

5 sessions /

1 x week



## FIRST WRINKLES PROTOCOL

First wrinkles and loss  
of elasticity

RECOMMENDED CYCLE:

4 sessions /

1 every 14 days



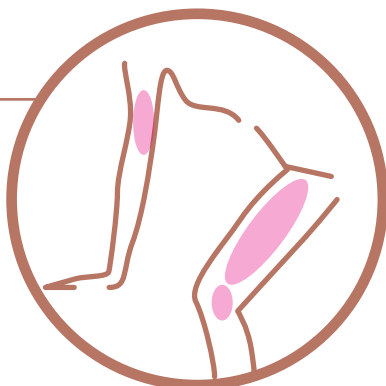
## BODY PROTOCOL

Arms, hands, inner thigh,  
knees, belly

RECOMMENDED CYCLE:

to be evaluated

on a single case basis



# OUR PRODUCTS

---

FOR PROFESSIONAL USE AND HOME-CARE

GIOVEDIA®

**FACE**

**NECK  
DÉCOLLETÉ**

**BODY**

Gi



## GIOVEDIA PRE-TREATMENT & CLEANSER

## PRE-TREATMENT AND CLEANSER

Deep cleansing solution specifically formulated to prepare the skin for GIOVEDIA LIFTING GEL. It gently cleanses without drying and without leaving any residue on the skin.

No need to rinse.

Formulated with mild detergents and calibrated acids, glycolic, lactic, citric and phytic.

Professional use only.

GIOVEDiA®



**GIOVEDIA**  
**LIFTING GEL**  
**FACE AND BODY**  
**LIFTING GEL FOR**  
**FACE AND BODY**

Pack of 5 ampoules of 4 ml

Professional use only

External use

Dermatologically tested

Nickel Tested

The product should be stored  
at a maximum of +8°C







## GIOVEDIA AFTER TREATMENT CREAM EMOLLIENT CREAM AFTER TREATMENT

An intensive cream, rich in **natural substances**, carefully formulated to nourish and protect the skin after GIOVEDIA treatment. A cosmetic product which contains a selected mixture of **precious plant oils** enhanced by the fermentation process, high-quality **shea butter** and a **peptide**, specifically **Acetyl Hexapeptide-49**, which reduces flaking and increases hydration. Also ideal for the daily skin-care routine, when there is a need for a rich cream.

Formulated to nourish the skin after treatment, used in the cabin session with GIOVEDIA Touch and delivered to the client for their skin-care routine in the following days.

**INCI:**

\*ROSA DAMASCENA FLOWER WATER, \*POLIANTHES TUBEROSA FLOWER EXTRACT, \*BUTYROSPERMUM PARKII (SHEA) BUTTER, \*PROPANEDIOL, POLYGLYCERYL-3 DICITRATE/STEARATE, \*ROSA CANINA FRUIT OIL, \*PSEUDOSZYMA EPICOLA/AVOCADO OIL, \*PSEUDOSZYMA EPICOLA/ARGANIA SPINOSA KERNEL OIL, \*SIMMONDSIA CHINENSIS (JOJOBA) SEED OIL, \*PSEUDOSZYMA EPICOLA/CAMELIA JAPONICA SEED OIL FERMENT EXTRACT FILTRATE, GLYCERIN, AQUA (WATER), GLYCERYL STEARATE, \*SQUALANE, BUTYLENE GLYCOL, STEARYL ALCOHOL, ISOPROPYL PALMITATE, CAPRYLIC/CAPRIC TRIGLYCERIDE, BENZYL ALCOHOL, \*OPUNTIA FICUS-INDICA STEM EXTRACT, CITRIC ACID, \*ACETYL HEXAPEPTIDE-49, SODIUM BENZOATE, POTASSIUM CITRATE, \*SCLEROTIUM GUM, \*ECHINACEA PURPUREA CALLUS LYSATE, SODIUM GLUCURONATE, \*SODIUM HYALURONATE, DEHYDROACETIC ACID, \*TOCOPHEROL, HELIANTHUS ANNUUS (SUNFLOWER) SEED OIL, POTASSIUM SORBATE.



## GIOVEDIA FIRMING SERUM FIRMING SERUM

A powerful complex of three types **of hyaluronic acids, peptides, bioplacenta and micronized silver**, to give a **firming** effect and **deep hydration** to the skin.

Strengthens and prolongs results of GIOVEDIA treatment.



**INCI:**

AQUA (Water), BUTYLENE GLYCOL, GLYCERIN, \*ACETYL GLUCOSAMINE, \*SODIUM POLYGLUTAMATE, PENTYLENE GLYCOL, DIMETHICONE, SODIUM ACRYLATE/SODIUM ACRYLOYLDIMETHYL TAURATE COPOLYMER, LECITHIN (Phosphatidylcholine), \*SCLEROTIUM GUM, \*SODIUM HYALURONATE CROSSPOLYMER, \*HYDROLYZED SODIUM HYALURONATE, \*CI 77820 (Silver), SODIUM ACETYLATED HYALURONATE, SODIUM HYALURONATE, \*TAMARINDUS INDICA SEED POLYSACCHARIDE, PEG/PPG-18/18 DIMETHICONE, TRIDECETH-6, \*BACILLUS/FOLIC ACID FERMENT FILTRATE EXTRACT, ACETYL GLUTAMINE, \*SH-OLIGOPEPTIDE-1, CAPRYLYL GLYCOL, \*SH-OLIGOPEPTIDE-2, \*SH-POLYPEPTIDE-1, \*SH-POLYPEPTIDE-9, \*SH-POLYPEPTIDE-11, 1,2-HEXANEDIOL, ETHYLHEXYLGLYCERIN.



GIOVEDIA.COM



FOLLOW US



giovediaofficial

GIOVEDIA srl

GIOVEDIA@GIOVEDIA.EU – T. +39 040 360408

Registered Office: VIA SANNIO, 3 – 20137 MILANO (Italy)

Head Office: VIA FLAVIA, 23/1 – 34148 TRIESTE (Italy)

